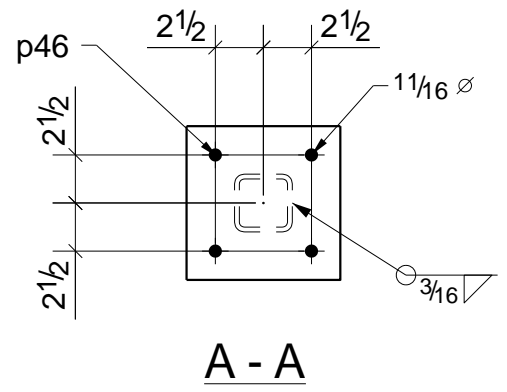
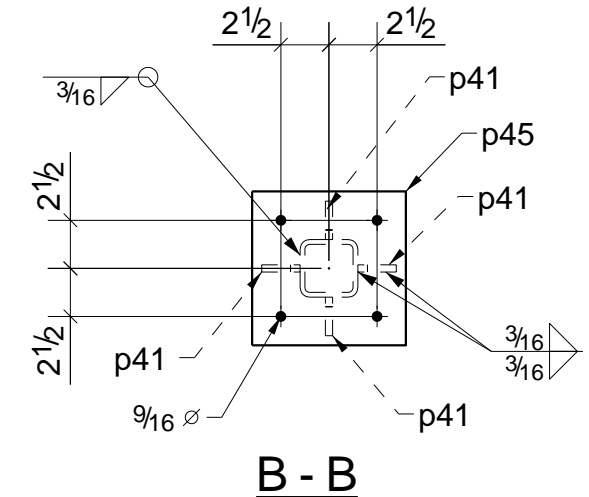
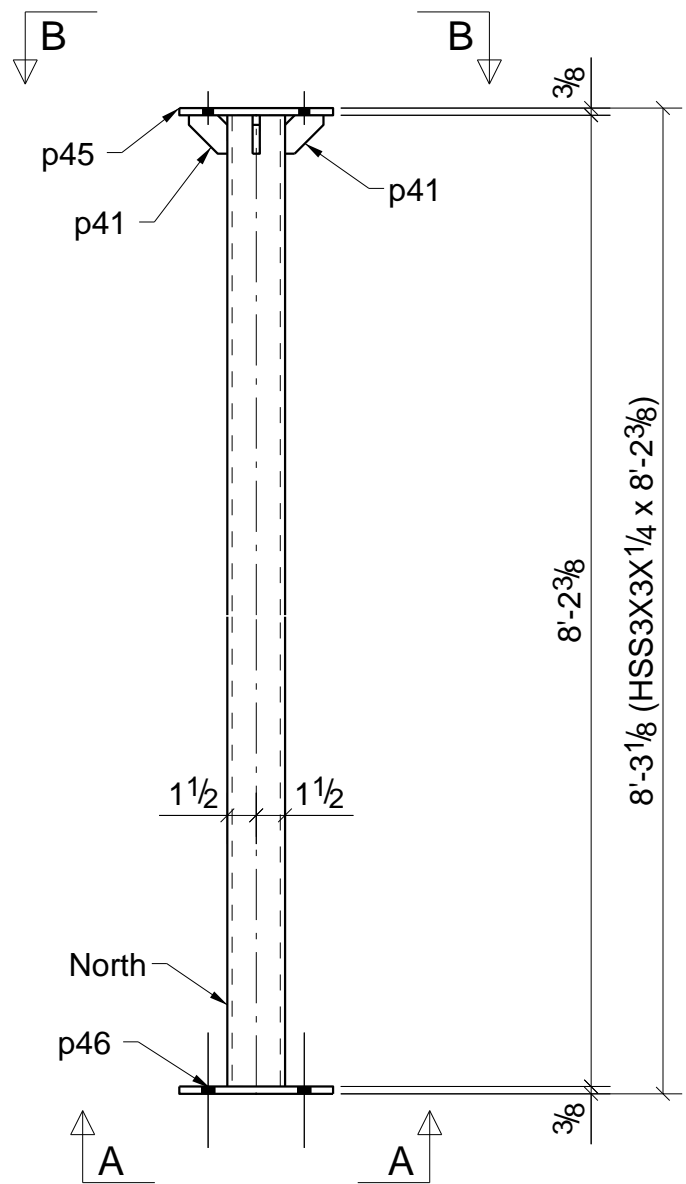
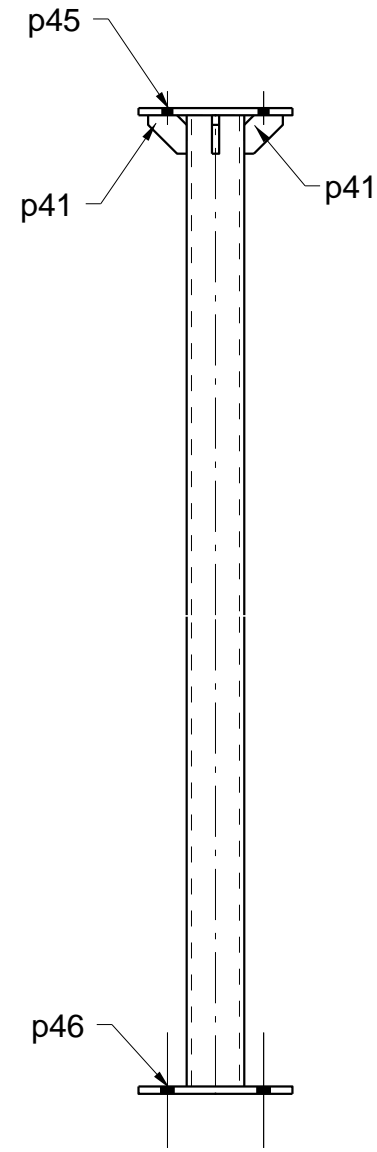


BILL OF MATERIAL

| MARK | QTY | DESCRIPTION | LENGTH | WEIGHT | REMARKS |
|---------------------------|---------------------------------|-------------|-----------|-------------|------------------|
| 1A | 1 | COLUMN | | | SQ-2 |
| 1A | 1 | HSS3X3X1/4 | 8'-2 3/8" | 68.1 | ASTM A554 GR.304 |
| p41 | 4 | PL3/8"X2" | 0'-2" | 1.2 | ASTM A240 GR.304 |
| p45 | 1 | PL3/8"X8" | 0'-8" | 6.8 | ASTM A240 GR.304 |
| p46 | 1 | PL3/8"X8" | 0'-8" | 6.8 | ASTM A240 GR.304 |
| TOTAL WEIGHT THIS DRAWING | | | | 83 | |
| | | | | | |
| QTY | SITE BOLTS | | LENGTH | | |
| 4 | 1/2" Diam SST EPOXY ANCHOR BOLT | | 6" | W/ 4" EMBED | |



ONE - COLUMN - 1A

REF: E2 E3 E5

- Notes:
1. Welding Electrodes: E70XX Low Hydrogen
 2. Surface Prep: SSPC SP-2
 3. Shop Primer: Minimum DFT=2.0 Mil

MARTIN'S METAL FABRICATION

STRUCTURAL STEEL DIVISION
VACAVILLE CA.

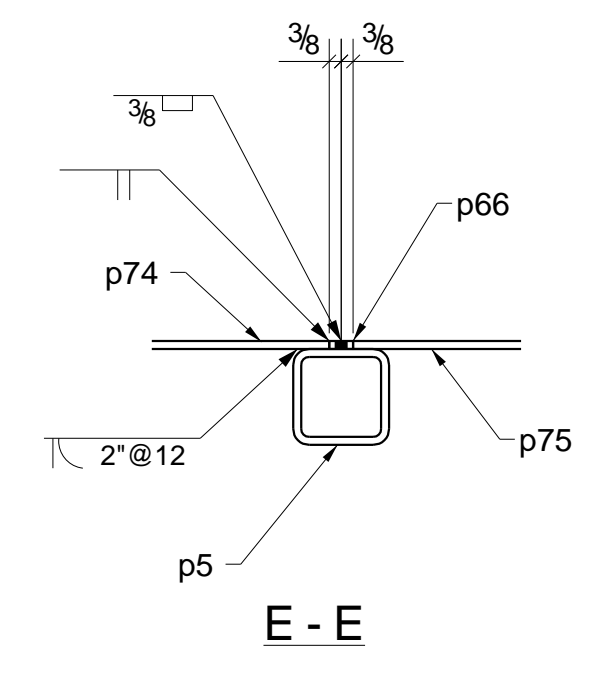
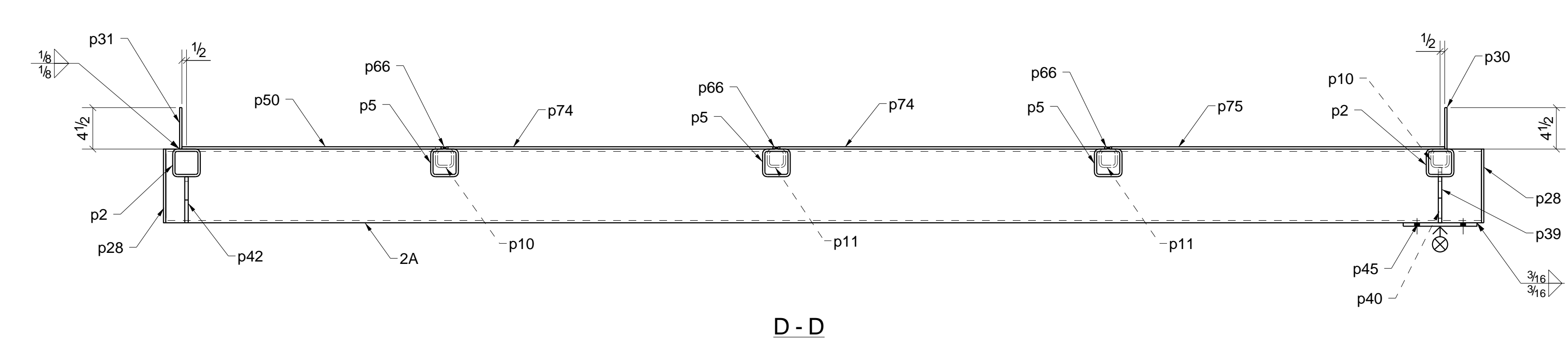
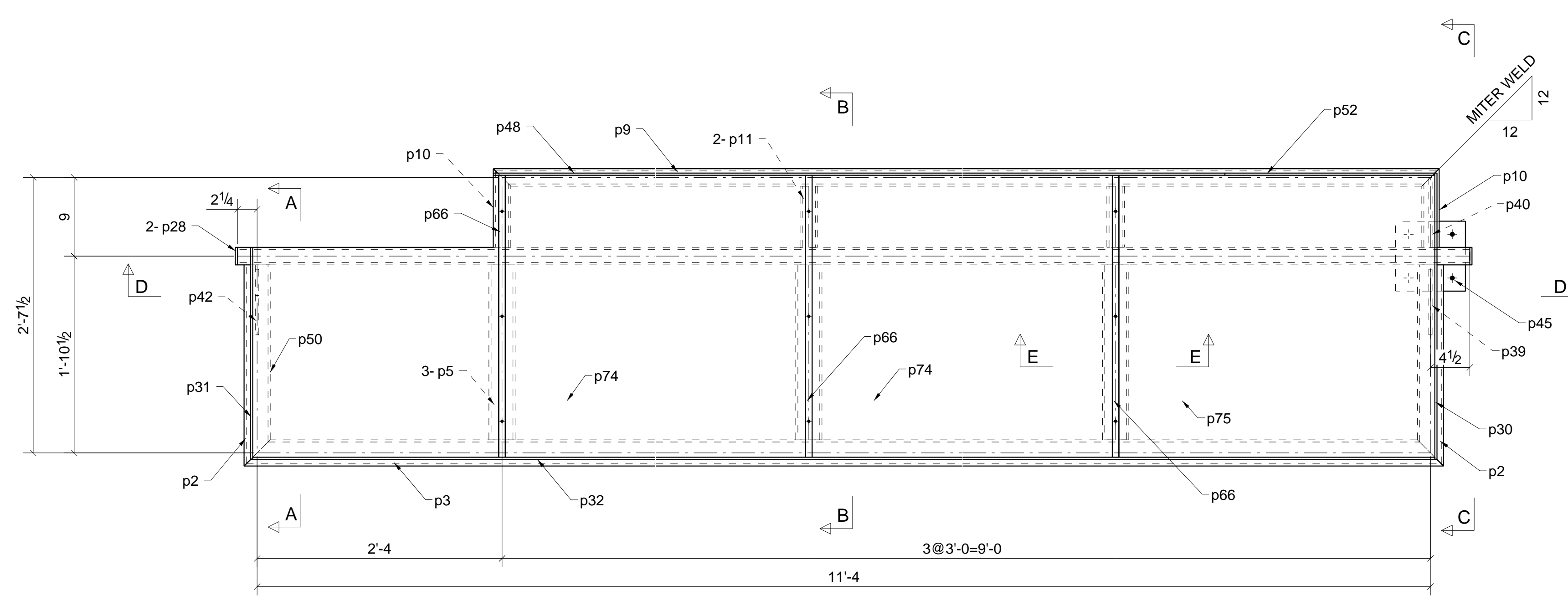
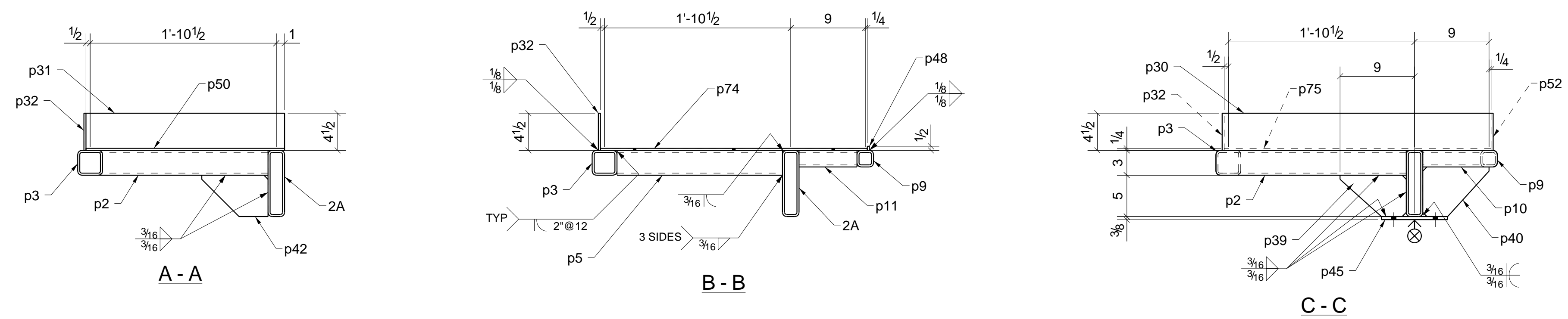
| | | | | |
|------|----|------------|-----------|--------|
| DWG: | MF | 12/16/2021 | QTY REQD: | SCALE: |
| CHK: | AS | 12/22/2021 | MATL: | |

| | | | | |
|--|------------|----------------|--|--------|
| PRIMER: | | | | |
| TITLE | | | | |
| PROJECT NAME DL2 ACCESS PLATFORM EXTENSION | | | | |
| PROJECT ADD. | | | | |
| DESCRIPTION COLUMN | | | | |
| SIZE: A | DWG NO: 1A | JOB No. 210468 | | REV: 1 |

| NO. | BY | APPD | DATE | DESCRIPTION |
|-----|----|------|------------|---------------------------|
| A | | | 12/16/2021 | For Approval |
| 0 | | | 12/22/2021 | For Fabrication |
| 1 | | | 01/04/2022 | PER NEW DESIGN & APPROVAL |

TOLERANCES ARE IN INCHES,
UNLESS OTHERWISE SPECIFIED
FRACTIONS: ± 1/16"
DECIMALS:
.XX ± .015
.XXX ± .005
.XXXX ± .0005
ANGLES: ± 1°

THE INFORMATION CONTAINED IN THIS DRAWING IS CONFIDENTIAL AND PROPRIETARY TO MARTIN'S METAL FABRICATION. ANY REPRODUCTION IN PART OR WHOLE WITHOUT THE WRITTEN PERMISSION OF MARTIN'S METAL FABRICATION IS PROHIBITED.



ONE - BEAM - 2A

REF: E3

- Notes:
1. Welding Electrodes: E70XX Low Hydrogen
 2. Surface Prep: SSPC SP-2
 3. Shop Primer: Minimum DFT=2.0 Mil

THE INFORMATION CONTAINED IN THIS DRAWING IS CONFIDENTIAL AND PROPRIETARY TO MARTIN'S METAL FABRICATION. ANY REPRODUCTION IN PART OR WHOLE WITHOUT THE WRITTEN PERMISSION OF MARTIN'S METAL FABRICATION IS PROHIBITED.

| NO. | BY | APPD | DATE | DESCRIPTION |
|-----|----|------|------------|---------------------------|
| A | | | 12/16/2021 | For Approval |
| 0 | | | 12/22/2021 | For Fabrication |
| 1 | | | 01/04/2022 | PER NEW DESIGN & APPROVAL |

TOLERANCES ARE IN INCHES, UNLESS OTHERWISE SPECIFIED
 FRACTIONS: ± 1/16"
 DECIMALS:
 .XX ± .015
 .XXX ± .005
 .XXXX ± .0005
 ANGLES: ± 1°

BILL OF MATERIAL

| MARK | QTY | DESCRIPTION | LENGTH | WEIGHT | REMARKS |
|---------------------------|-----|-------------------|-------------|--------|------------------|
| 2A | 1 | BEAM | | | SQ-2 |
| 2A | 1 | HSS8X2X1/4 | 11'-10 3/4" | 174.1 | ASTM A554 GR.304 |
| p2 | 2 | HSS3X3X1/4 | 1'-11" | 31.8 | ASTM A554 GR.304 |
| p3 | 1 | HSS3X3X1/4 | 11'-7" | 96.2 | ASTM A554 GR.304 |
| p5 | 3 | HSS3X3X1/4 | 1'-8" | 41.5 | ASTM A554 GR.304 |
| p9 | 1 | HSS2X2X1/4 | 9'-2" | 47.1 | ASTM A554 GR.304 |
| p10 | 2 | HSS2X2X1/4 | 0'-9" | 7.7 | ASTM A554 GR.304 |
| p11 | 2 | HSS2X2X1/4 | 0'-7" | 6.0 | ASTM A554 GR.304 |
| p28 | 2 | PL1/4"X2" | 0'-8" | 2.3 | ASTM A240 GR.304 |
| p30 | 1 | PL1/4"X4 1/2" | 2'-8 3/4" | 10.4 | ASTM A240 GR.304 |
| p31 | 1 | PL1/4"X4 1/2" | 2'-0 1/4" | 7.7 | ASTM A240 GR.304 |
| p32 | 1 | PL1/4"X4 1/2" | 11'-5" | 43.7 | ASTM A240 GR.304 |
| p39 | 1 | PL3/8"X5" | 0'-8" | 3.0 | ASTM A240 GR.304 |
| p40 | 1 | PL3/8"X6" | 0'-8" | 3.6 | ASTM A240 GR.304 |
| p42 | 1 | PL3/8"X5" | 0'-8" | 3.2 | ASTM A240 GR.304 |
| p45 | 1 | PL3/8"X8" | 0'-8" | 6.8 | ASTM A240 GR.304 |
| p48 | 1 | PL1/4"X1/2" | 7'-1 1/2" | 3.0 | ASTM A240 GR.304 |
| p50 | 1 | CHKPL1/4"X28 1/8" | 2'-8 1/4" | 48.2 | ASTM A240 GR.304 |
| p52 | 1 | PL1/4"X4 1/2" | 2'-0" | 7.7 | ASTM A240 GR.304 |
| p66 | 3 | PL1/4"X3/4" | 2'-8 1/4" | 5.1 | ASTM A240 GR.304 |
| p74 | 2 | CHKPL1/4"X32 1/4" | 2'-11 1/4" | 161.2 | ASTM A240 GR.304 |
| p75 | 1 | CHKPL1/4"X32 1/4" | 3'-0 1/8" | 82.6 | ASTM A240 GR.304 |
| TOTAL WEIGHT THIS DRAWING | | | | 793 | |

| QTY | SITE BOLTS | LENGTH |
|-----|---------------------------------|--------|
| 4 | 1/2" Diam ASTM F593 GR.304 BOLT | 1 3/4" |

MARTIN'S METAL FABRICATION

STRUCTURAL STEEL DIVISION
 VACAVILLE CA.

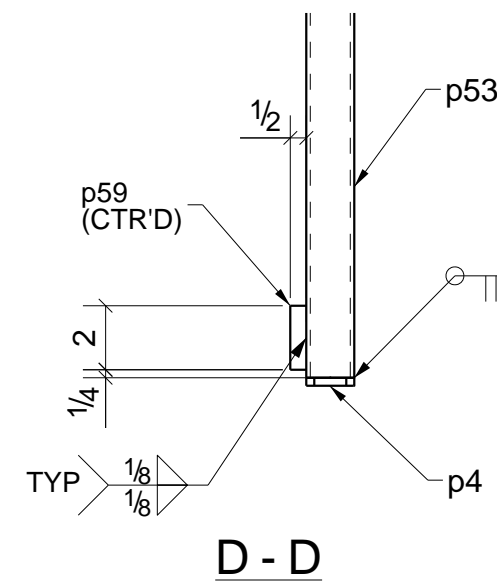
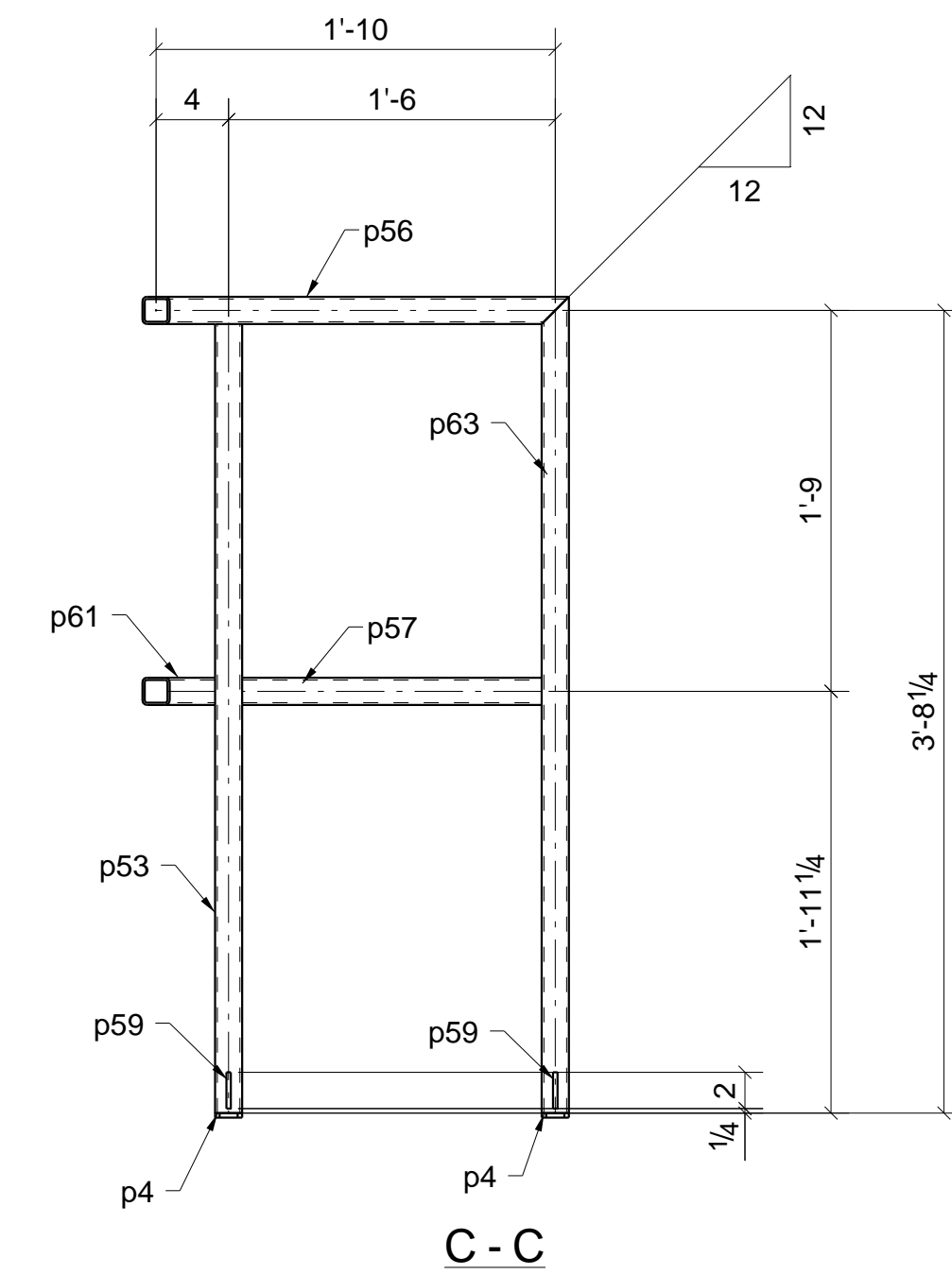
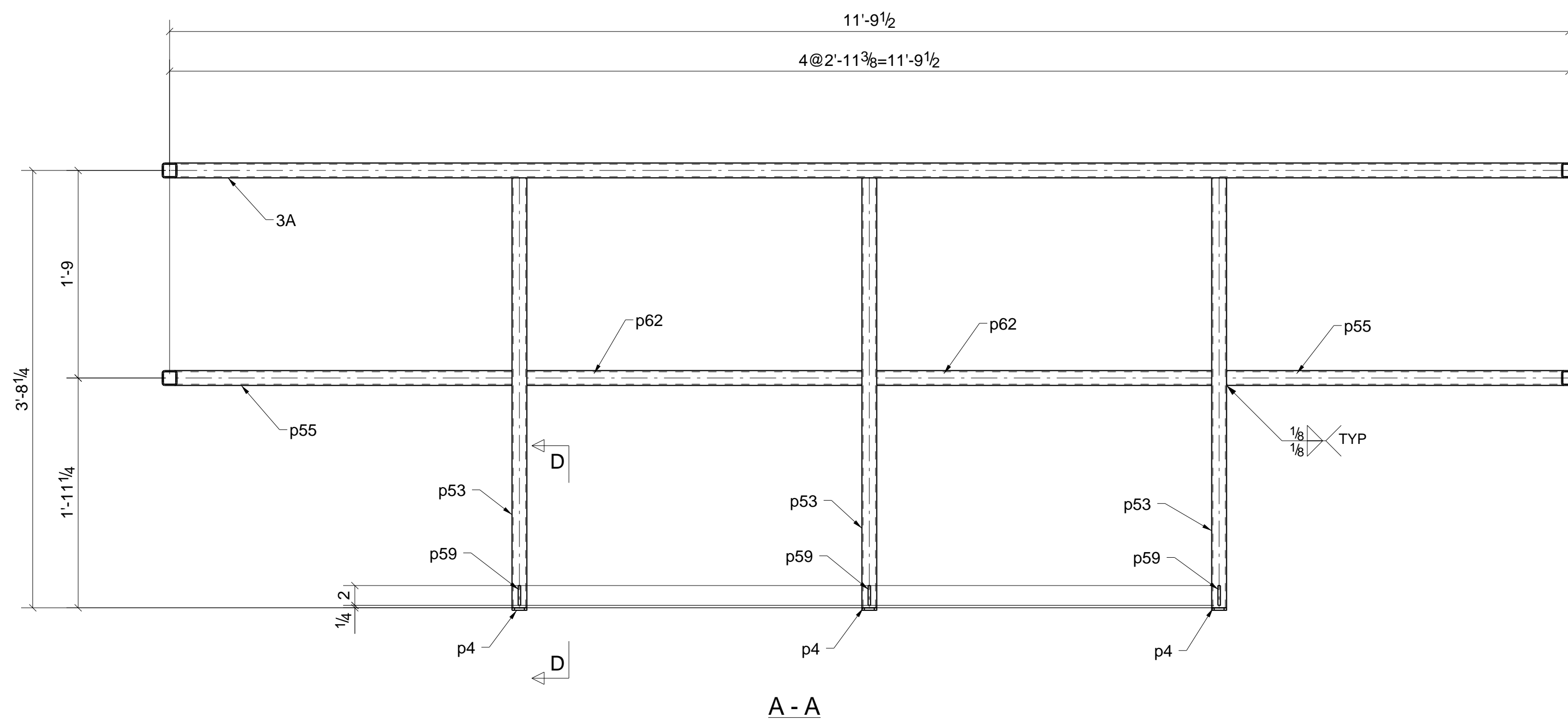
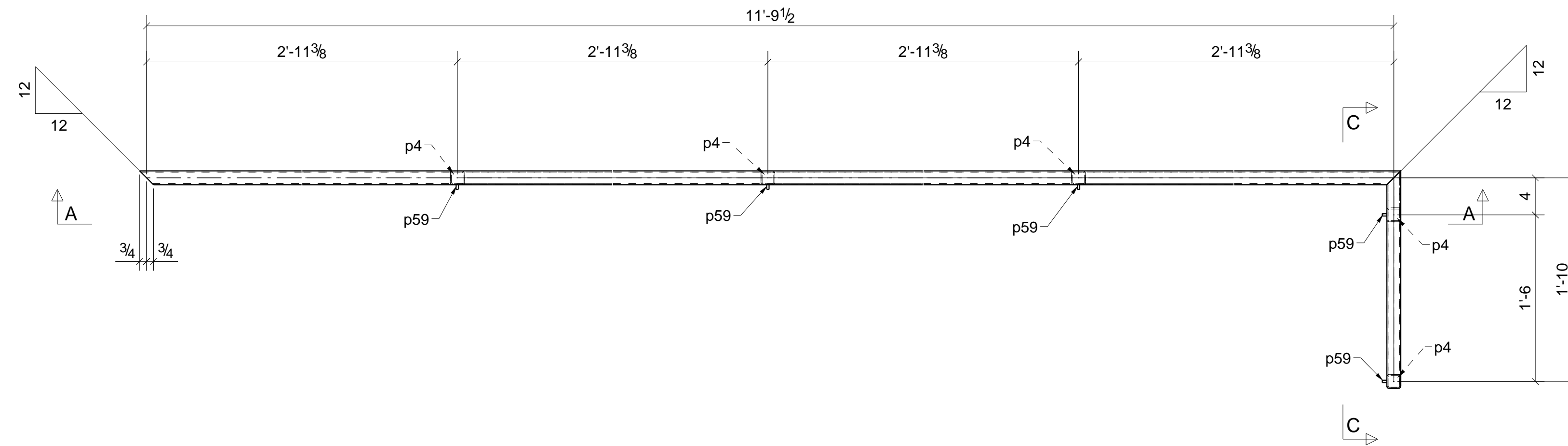
| | | | | |
|------|----|------------|-----------|--------|
| DWG: | MF | 12/16/2021 | QTY REQD: | SCALE: |
| CHK: | AS | 12/22/2021 | MATL: | |

PRIMER:

| | | | |
|---------------|-------------------------------|------|---|
| TITLE: | DL2 ACCESS PLATFORM EXTENSION | | |
| PROJECT NAME: | DL2 ACCESS PLATFORM EXTENSION | | |
| PROJECT ADD: | | | |
| DESCRIPTION: | BEAM | | |
| SIZE: | A | | |
| DWG NO: | 2A | | |
| JOB No. | 210468 | | |
| SHT | OF | REV: | 1 |

BILL OF MATERIAL

| MARK | QTY | DESCRIPTION | LENGTH | WEIGHT | REMARKS |
|---------------------------|-----|-------------------|------------|--------|------------------|
| 3A | 1 | GUARDRAIL | | | BEV-2 |
| 3A | 1 | TS1-1/2X1-1/2X1/8 | 11'-11" | 24.7 | ASTM A554 GR.304 |
| p4 | 5 | PL1/4"X1 1/2" | 0'-1 1/2" | 0.8 | ASTM A240 GR.304 |
| p53 | 4 | TS1-1/2X1-1/2X1/8 | 3'-7 1/2" | 30.1 | ASTM A554 GR.304 |
| p55 | 2 | TS1-1/2X1-1/2X1/8 | 2'-11 3/8" | 12.2 | ASTM A554 GR.304 |
| p56 | 1 | TS1-1/2X1-1/2X1/8 | 1'-11 1/2" | 4.1 | ASTM A554 GR.304 |
| p57 | 1 | TS1-1/2X1-1/2X1/8 | 1'-4 1/2" | 2.9 | ASTM A554 GR.304 |
| p59 | 5 | PL1/4"X1/2" | 0'-2" | 0.4 | ASTM A240 GR.304 |
| p61 | 1 | TS1-1/2X1-1/2X1/8 | 0'-4" | 0.7 | ASTM A554 GR.304 |
| p62 | 2 | TS1-1/2X1-1/2X1/8 | 2'-9 7/8" | 11.7 | ASTM A554 GR.304 |
| p63 | 1 | TS1-1/2X1-1/2X1/8 | 3'-9" | 7.8 | ASTM A554 GR.304 |
| TOTAL WEIGHT THIS DRAWING | | | | 95 | |



ONE - GUARDRAIL - 3A

REF: E4

Notes:

1. Welding Electrodes: E70XX Low Hydrogen
2. Surface Prep: SSPC SP-2
3. Shop Primer: Minimum DFT=2.0 Mil

THE INFORMATION CONTAINED IN THIS DRAWING IS CONFIDENTIAL AND PROPRIETARY TO MARTIN'S METAL FABRICATION. ANY REPRODUCTION IN PART OR WHOLE WITHOUT THE WRITTEN PERMISSION OF MARTIN'S METAL FABRICATION IS PROHIBITED.

| NO. | BY | APPD | DATE | DESCRIPTION |
|-----|----|------|------------|---------------------------|
| A | | | 12/16/2021 | For Approval |
| 0 | | | 12/22/2021 | For Fabrication |
| 1 | | | 01/04/2022 | PER NEW DESIGN & APPROVAL |

TOLERANCES ARE IN INCHES, UNLESS OTHERWISE SPECIFIED
 FRACTIONS: ± 1/16"
 DECIMALS:
 .XX ± .015
 .XXX ± .005
 .XXXX ± .0005
 ANGLES: ± 1°

MARTIN'S METAL FABRICATION

STRUCTURAL STEEL DIVISION
 VACAVILLE CA.

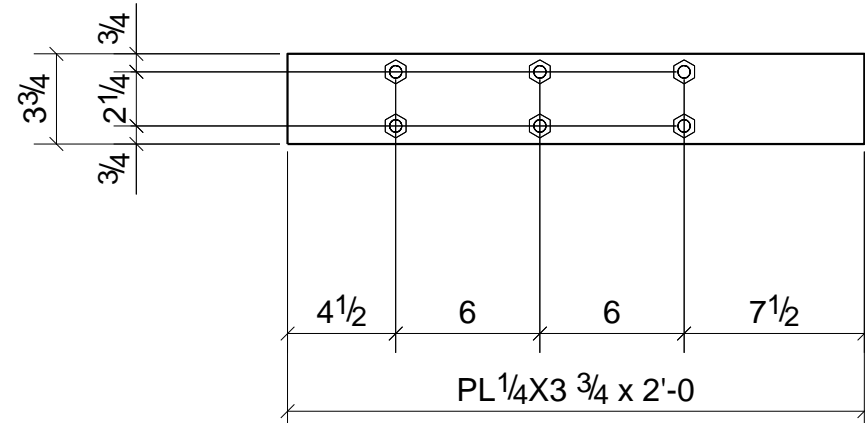
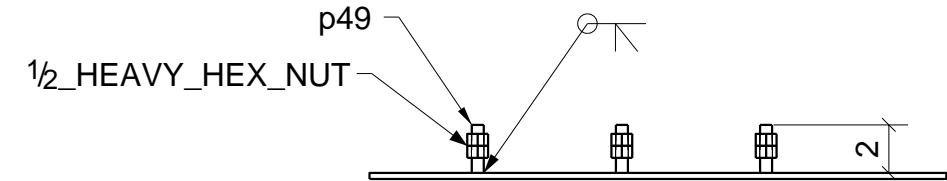
| | | | | |
|------|----|------------|-----------|--------|
| DWG: | MF | 12/16/2021 | QTY REQD: | SCALE: |
| CHK: | AS | 12/22/2021 | MATL: | |

| | | | | |
|--------------------------------------|---------|----|----------------|--------|
| PRIMER: | | | | |
| TITLE: DL2 ACCESS PLATFORM EXTENSION | | | | |
| PROJECT NAME: GUARDRAIL | | | | |
| PROJECT ADD: | | | | |
| DESCRIPTION: | | | | |
| SIZE: A | DWG NO: | 3A | JOB No. 210468 | REV: 1 |

GRID LOCATION
-/-

BILL OF MATERIAL

| MARK | QTY | DESCRIPTION | LENGTH | WEIGHT | REMARKS |
|---------------------------|------------|-------------------|--------|--------|------------------|
| 4A | 1 | PLATE | | | SQ-2 |
| 4A | 1 | PL1/4"X3 3/4" | 2'-0" | 6.4 | ASTM A240 GR.304 |
| p49 | 6 | THR'D_ROD1/2" | 0'-2" | 0.6 | ASTM A240 GR.304 |
| | 12 | 1/2_HEAVY_HEX_NUT | | 1 | |
| TOTAL WEIGHT THIS DRAWING | | | | 7 | |
| QTY | SITE BOLTS | | LENGTH | | |



ONE - PLATE - 4A

REF: E3

- Notes:
- 1.Welding Electrodes: E70XX Low Hydrogen
 - 2.Surface Prep: SSPC SP-2
 - 3.Shop Primer: Minimum DFT=2.0 Mil

MARTIN'S METAL FABRICATION

STRUCTURAL STEEL DIVISION
VACAVILLE CA.

| | | | | |
|------|----|------------|-----------|--------|
| DWG: | MF | 12/16/2021 | QTY REQD: | SCALE: |
| CHK: | AS | 12/22/2021 | MATL: | |

PRIMER:

TITLE: DL2 ACCESS PLATFORM EXTENSION

PROJECT NAME: PLATE

PROJECT ADD.:

DESCRIPTION:

SIZE: A DWG NO: 4A

JOB No. 210468

SHT OF REV: 1

| THE INFORMATION CONTAINED IN THIS DRAWING IS CONFIDENTIAL AND PROPRIETARY TO MARTIN'S METAL FABRICATION. ANY REPRODUCTION IN PART OR WHOLE WITHOUT THE WRITTEN PERMISSION OF MARTIN'S METAL FABRICATION IS PROHIBITED. | REVISIONS | NO. | BY | APPD | DATE | DESCRIPTION |
|--|-----------|-----|----|------|------------|---------------------------|
| | | A | | | 12/16/2021 | For Approval |
| | | 0 | | | 12/22/2021 | For Fabrication |
| | | 1 | | | 01/04/2022 | PER NEW DESIGN & APPROVAL |

TOLERANCES ARE IN INCHES, UNLESS OTHERWISE SPECIFIED

FRACTIONS: ± 1/16"

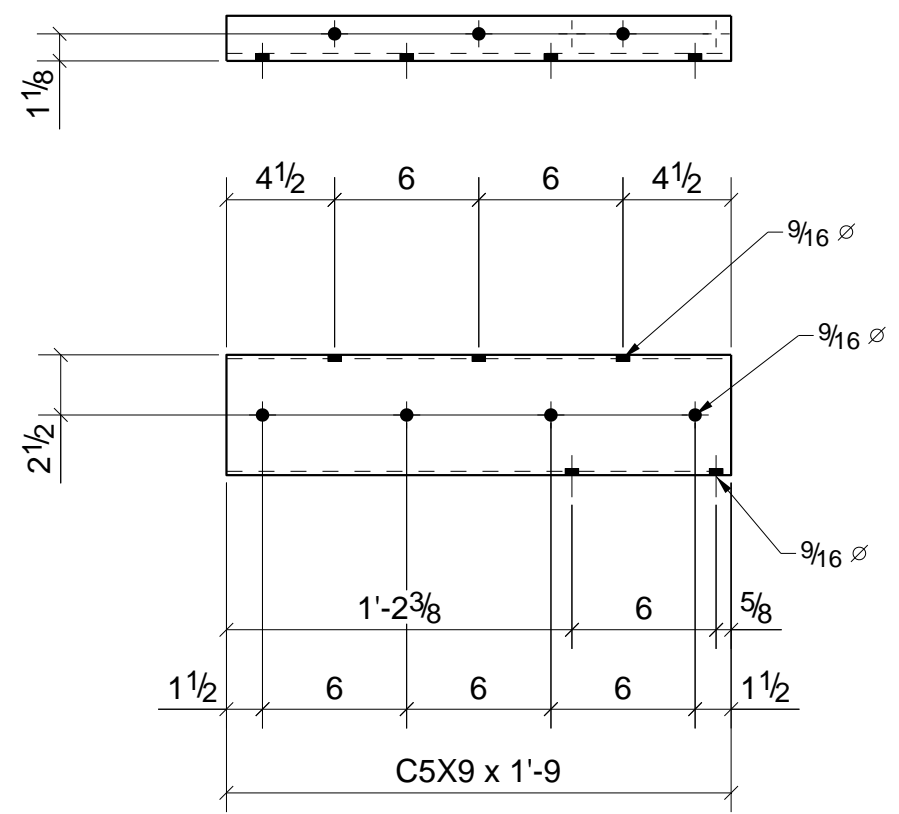
DECIMALS:
.XX ± .015
.XXX ± .005
.XXXX ± .0005

ANGLES: ± 1°

GRID LOCATION
I-

BILL OF MATERIAL

| MARK | QTY | DESCRIPTION | LENGTH | WEIGHT | REMARKS |
|---------------------------|---------------------------------|-------------|--------|--------|------------------|
| 5A | 1 | CHANNEL | | | SQ-2 |
| 5A | 1 | C5X9 | 1'-9" | 15.7 | ASTM A240 GR.304 |
| TOTAL WEIGHT THIS DRAWING | | | | 16 | |
| QTY | SITE BOLTS | | LENGTH | | |
| 4 | 1/2" Diam ASTM F593 GR.304 BOLT | | 1 1/2" | | |
| 2 | 1/2" Diam ASTM F593 GR.304 BOLT | | 1 3/4" | | |



ONE - CHANNEL - 5A

REF: E3

- Notes:
- 1.Welding Electrodes: E70XX Low Hydrogen
 - 2.Surface Prep: SSPC SP-2
 - 3.Shop Primer: Minimum DFT=2.0 Mil

MARTIN'S METAL FABRICATION

STRUCTURAL STEEL DIVISION
VACAVILLE CA.

| | | | | |
|------|----|------------|-----------|--------|
| DWG: | MF | 12/16/2021 | QTY REQD: | SCALE: |
| CHK: | AS | 12/22/2021 | MATL: | |

PRIMER:

TITLE: DL2 ACCESS PLATFORM EXTENSION

PROJECT NAME: CHANNEL

PROJECT ADD.:

DESCRIPTION:

SIZE: A DWG NO: 5A

JOB No. 210468

SHT OF REV: 1

| NO. | BY | APPD | DATE | DESCRIPTION |
|-----|----|------|------------|---------------------------|
| A | | | 12/16/2021 | For Approval |
| 0 | | | 12/22/2021 | For Fabrication |
| 1 | | | 01/04/2022 | PER NEW DESIGN & APPROVAL |

TOLERANCES ARE IN INCHES, UNLESS OTHERWISE SPECIFIED

FRACTIONS: ± 1/16"

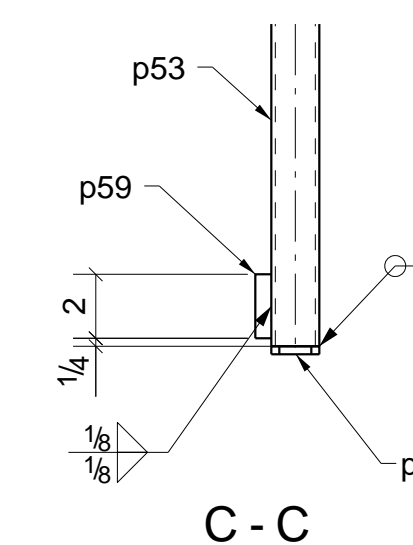
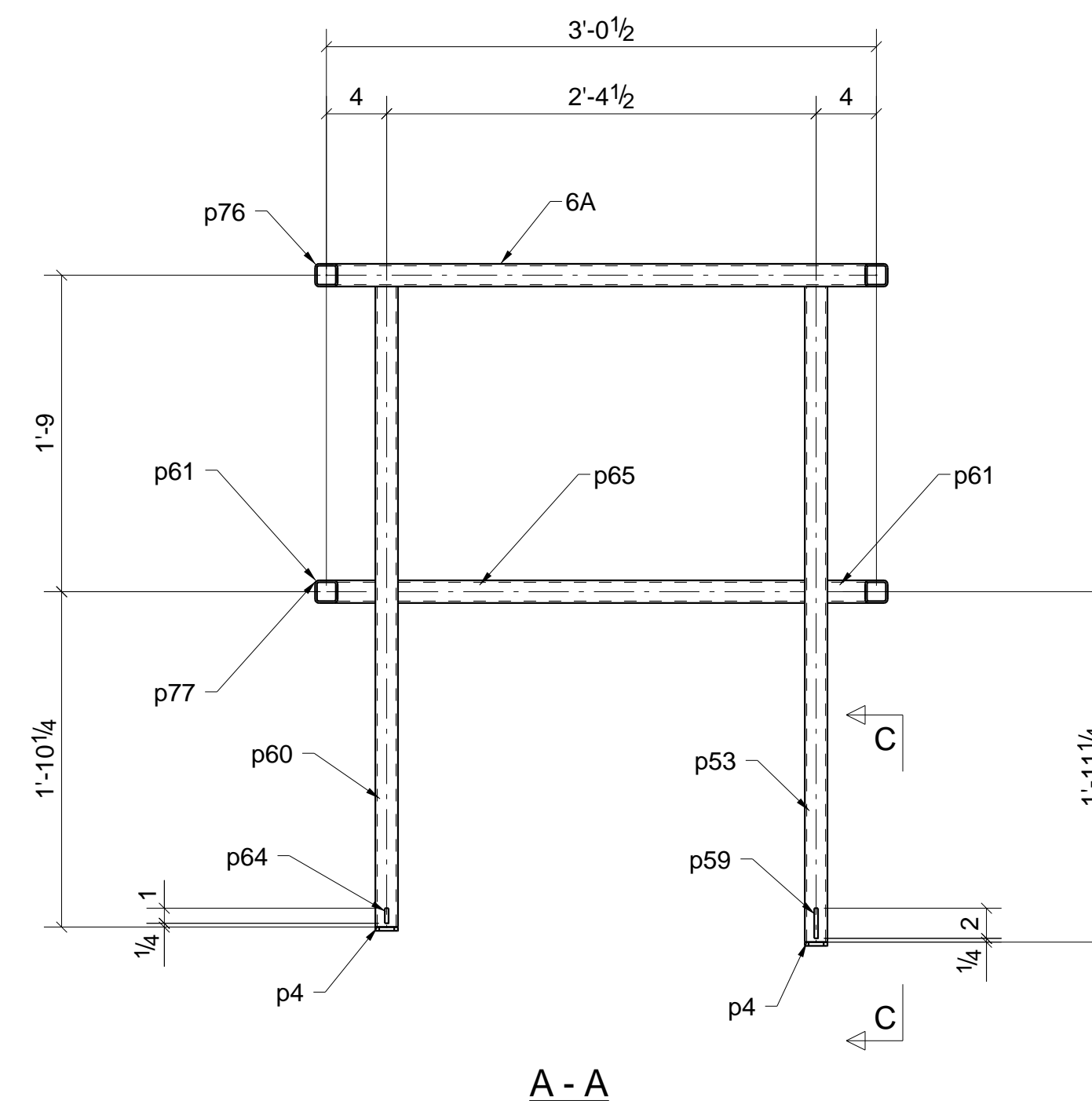
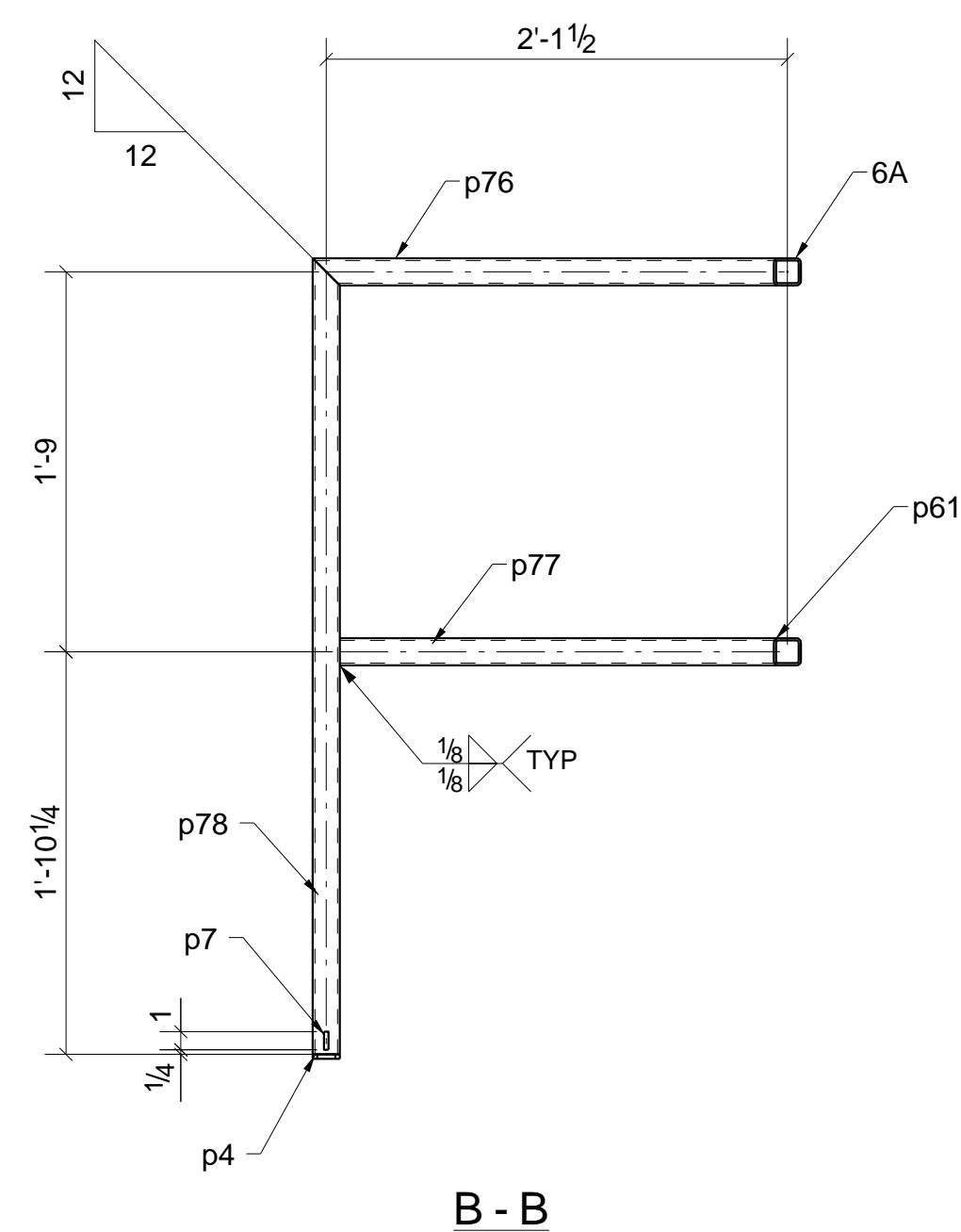
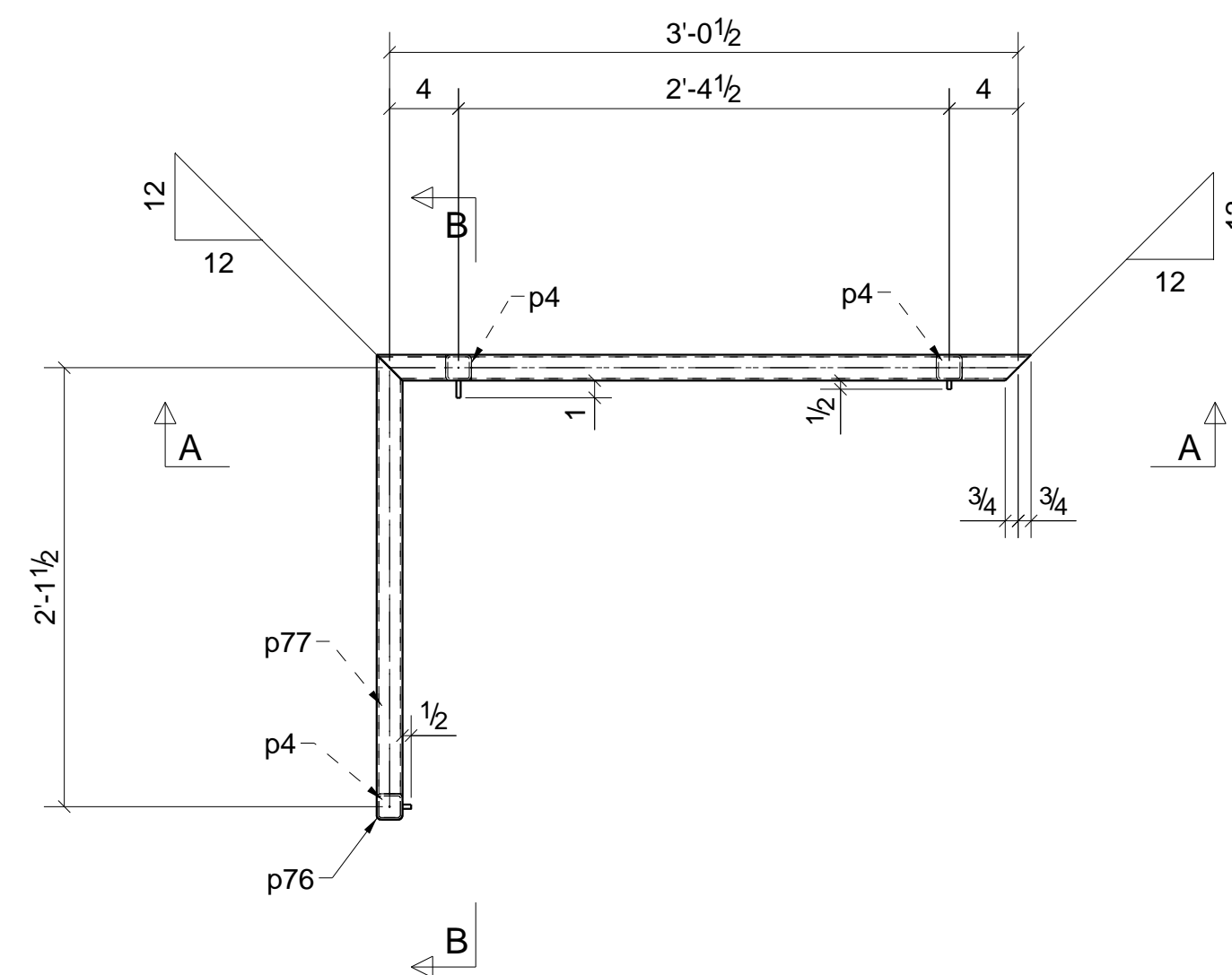
DECIMALS:
.XX ± .015
.XXX ± .005
.XXXX ± .0005

ANGLES: ± 1°

THE INFORMATION CONTAINED IN THIS DRAWING IS CONFIDENTIAL AND PROPRIETARY TO MARTIN'S METAL FABRICATION. ANY REPRODUCTION IN PART OR WHOLE WITHOUT THE WRITTEN PERMISSION OF MARTIN'S METAL FABRICATION IS PROHIBITED.

BILL OF MATERIAL

| MARK | QTY | DESCRIPTION | LENGTH | WEIGHT | REMARKS |
|---------------------------|-----|-------------------|-----------|--------|------------------|
| 6A | 1 | GUARDRAIL | | | BEV-2 |
| 6A | 1 | TS1-1/2X1-1/2X1/8 | 3'-2" | 6.6 | ASTM A554 GR.304 |
| p4 | 3 | PL1/4"X1 1/2" | 0'-1 1/2" | 0.5 | ASTM A240 GR.304 |
| p7 | 1 | PL1/4"X1/2" | 0'-1" | 0.0 | ASTM A240 GR.304 |
| p53 | 1 | TS1-1/2X1-1/2X1/8 | 3'-7 1/2" | 7.5 | ASTM A554 GR.304 |
| p59 | 1 | PL1/4"X1/2" | 0'-2" | 0.1 | ASTM A240 GR.304 |
| p60 | 1 | TS1-1/2X1-1/2X1/8 | 3'-6 1/2" | 7.4 | ASTM A554 GR.304 |
| p61 | 2 | TS1-1/2X1-1/2X1/8 | 0'-4" | 1.4 | ASTM A554 GR.304 |
| p64 | 1 | PL1/4"X1" | 0'-1" | 0.1 | ASTM A240 GR.304 |
| p65 | 1 | TS1-1/2X1-1/2X1/8 | 2'-3" | 4.7 | ASTM A554 GR.304 |
| p76 | 1 | TS1-1/2X1-1/2X1/8 | 2'-3" | 4.7 | ASTM A554 GR.304 |
| p77 | 1 | TS1-1/2X1-1/2X1/8 | 2'-1 1/2" | 4.4 | ASTM A554 GR.304 |
| p78 | 1 | TS1-1/2X1-1/2X1/8 | 3'-8" | 7.6 | ASTM A554 GR.304 |
| TOTAL WEIGHT THIS DRAWING | | | | 45 | |



ONE - GUARDRAIL - 6A

REF: E3

Notes:

1. Welding Electrodes: E70XX Low Hydrogen
2. Surface Prep: SSPC SP-2
3. Shop Primer: Minimum DFT=2.0 Mil

MARTIN'S METAL FABRICATION

STRUCTURAL STEEL DIVISION
VACAVILLE CA.

| | | | | |
|------|----|------------|-----------|--------|
| DWG: | MF | 01/04/2022 | QTY REQD: | SCALE: |
| CHK: | AS | 12/22/2021 | MATL: | |

| | | | | |
|--------------------------------------|------------|----------------|--------|--------|
| PRIMER: | | | | |
| TITLE: DL2 ACCESS PLATFORM EXTENSION | | | | |
| PROJECT ADD: GUARDRAIL | | | | |
| DESCRIPTION: | | | | |
| SIZE: A | DWG NO: 6A | JOB No. 210468 | SHT OF | REV: 1 |

| NO. | BY | APPD | DATE | DESCRIPTION |
|-----|----|------|------------|---------------------------|
| 1 | | | 01/04/2022 | PER NEW DESIGN & APPROVAL |

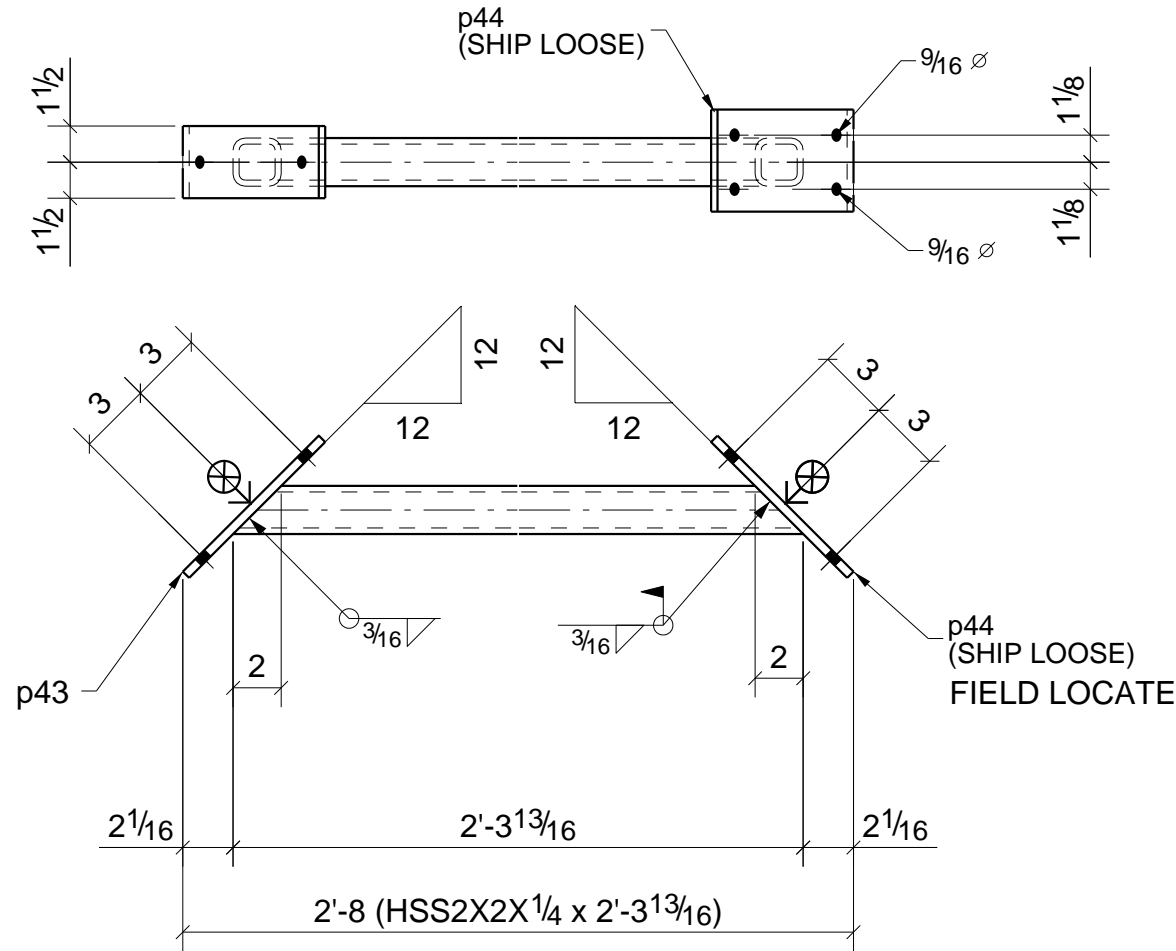
TOLERANCES ARE IN INCHES, UNLESS OTHERWISE SPECIFIED
 FRACTIONS: ± 1/16"
 DECIMALS:
 .XX ± .015
 .XXX ± .005
 .XXXX ± .0005
 ANGLES: ± 1°

THE INFORMATION CONTAINED IN THIS DRAWING IS CONFIDENTIAL AND PROPRIETARY TO MARTIN'S METAL FABRICATION. ANY REPRODUCTION IN PART OR WHOLE WITHOUT THE WRITTEN PERMISSION OF MARTIN'S METAL FABRICATION IS PROHIBITED.

BILL OF MATERIAL

| MARK | QTY | DESCRIPTION | LENGTH | WEIGHT | REMARKS |
|---------------------------|-----|---------------|-------------|--------|------------------|
| 7A | 1 | BRACE | | | BEV-2 |
| 7A | 1 | HSS2X2X1/4 | 2'-3 13/16" | 11.9 | ASTM A554 GR.304 |
| p43 | 1 | PL3/8"X3" | 0'-8" | 2.6 | ASTM A240 GR.304 |
| p44 | 1 | PL3/8"X4 1/4" | 0'-8" | 3.6 | ASTM A240 GR.304 |
| TOTAL WEIGHT THIS DRAWING | | | | 18 | |

| QTY | SITE BOLTS | LENGTH |
|-----|---------------------------------|--------|
| 2 | 1/2" Diam ASTM F593 GR.304 BOLT | 1 3/4" |
| 2 | 1/2" Diam ASTM F593 GR.304 BOLT | 3 1/4" |



ONE - BRACE - 7A

REF: E3

- Notes:
- 1.Welding Electrodes: E70XX Low Hydrogen
 - 2.Surface Prep: SSPC SP-2
 - 3.Shop Primer: Minimum DFT=2.0 Mil

MARTIN'S METAL FABRICATION

STRUCTURAL STEEL DIVISION
VACAVILLE CA.

| | | | | |
|------|----|------------|-----------|--------|
| DWG: | MF | 12/16/2021 | QTY REQD: | SCALE: |
| CHK: | AS | 12/22/2021 | MATL: | |

PRIMER:

| | |
|---------------|-------------------------------|
| TITLE: | DL2 ACCESS PLATFORM EXTENSION |
| PROJECT NAME: | DL2 ACCESS PLATFORM EXTENSION |
| PROJECT ADD.: | |
| DESCRIPTION: | BRACE |
| SIZE: | A |
| DWG NO: | 7A |
| JOB No. | 210468 |
| SHT | OF |
| REV: | 1 |

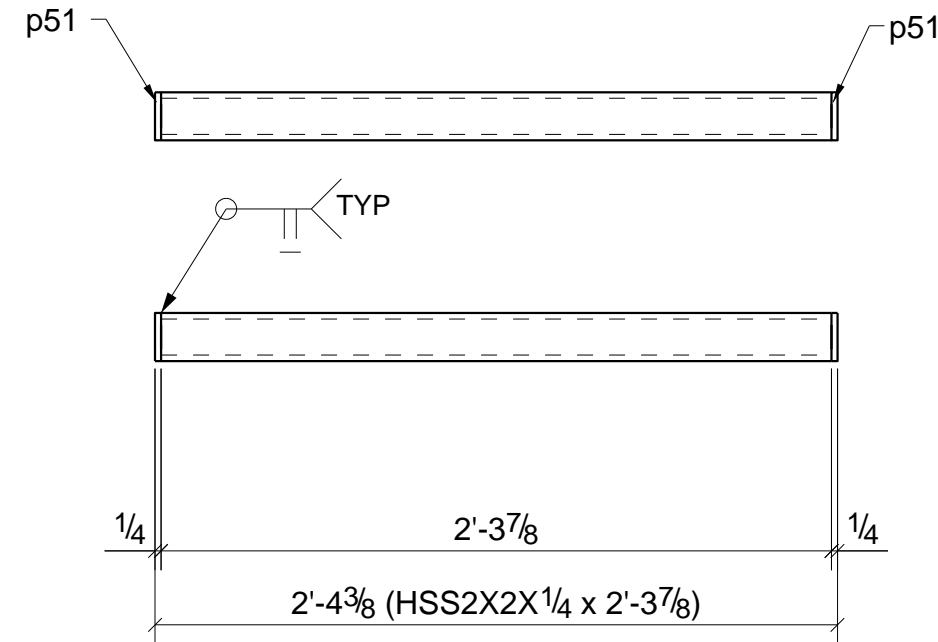
| THE INFORMATION CONTAINED IN THIS DRAWING IS CONFIDENTIAL AND PROPRIETARY TO MARTIN'S METAL FABRICATION. ANY REPRODUCTION IN PART OR WHOLE WITHOUT THE WRITTEN PERMISSION OF MARTIN'S METAL FABRICATION IS PROHIBITED. | REVISONS | NO. | BY | APPD | DATE | DESCRIPTION |
|--|----------|-----|----|------|------------|---------------------------|
| | | A | | | 12/16/2021 | For Approval |
| | | 0 | | | 12/22/2021 | For Fabrication |
| | | 1 | | | 01/04/2022 | PER NEW DESIGN & APPROVAL |

TOLERANCES ARE IN INCHES, UNLESS OTHERWISE SPECIFIED
 FRACTIONS: ± 1/16"
 DECIMALS:
 .XX ± .015
 .XXX ± .005
 .XXXX ± .0005
 ANGLES: ± 1°

GRID LOCATION
/-

BILL OF MATERIAL

| MARK | QTY | DESCRIPTION | LENGTH | WEIGHT | REMARKS |
|---------------------------|-----|-------------|-----------|--------|------------------|
| 8A | 1 | BRACE | | | SQ-2 |
| 8A | 1 | HSS2X2X1/4 | 2'-3 7/8" | 11.9 | ASTM A554 GR.304 |
| p51 | 2 | PL1/4"X2" | 0'-2" | 0.6 | ASTM A240 GR.304 |
| TOTAL WEIGHT THIS DRAWING | | | | 13 | |
| | QTY | SITE BOLTS | LENGTH | | |



ONE - BRACE - 8A

REF: E5

- Notes:
- 1.Welding Electrodes: E70XX Low Hydrogen
 - 2.Surface Prep: SSPC SP-2
 - 3.Shop Primer: Minimum DFT=2.0 Mil

MARTIN'S METAL FABRICATION

STRUCTURAL STEEL DIVISION
VACAVILLE CA.

| | | | | |
|------|----|------------|-----------|--------|
| DWG: | MF | 01/04/2022 | QTY REQD: | SCALE: |
| CHK: | | | MATL: | |

| | | | | |
|---|------------|----------------|--------|--------|
| PRIMER: | | | | |
| TITLE: PROJECT NAME DL2 ACCESS PLATFORM EXTENSION PROJECT ADD. DESCRIPTION BRACE | | | | |
| SIZE: A | DWG NO: 8A | JOB No. 210468 | SHT OF | REV: 1 |

| NO. | BY | APPD | DATE | DESCRIPTION |
|-----|----|------|------|-------------|
| | | | | |

TOLERANCES ARE IN INCHES,
UNLESS OTHERWISE SPECIFIED
FRACTIONS: ± 1/16"
DECIMALS:
.XX ± .015
.XXX ± .005
.XXXX ± .0005
ANGLES: ± 1°

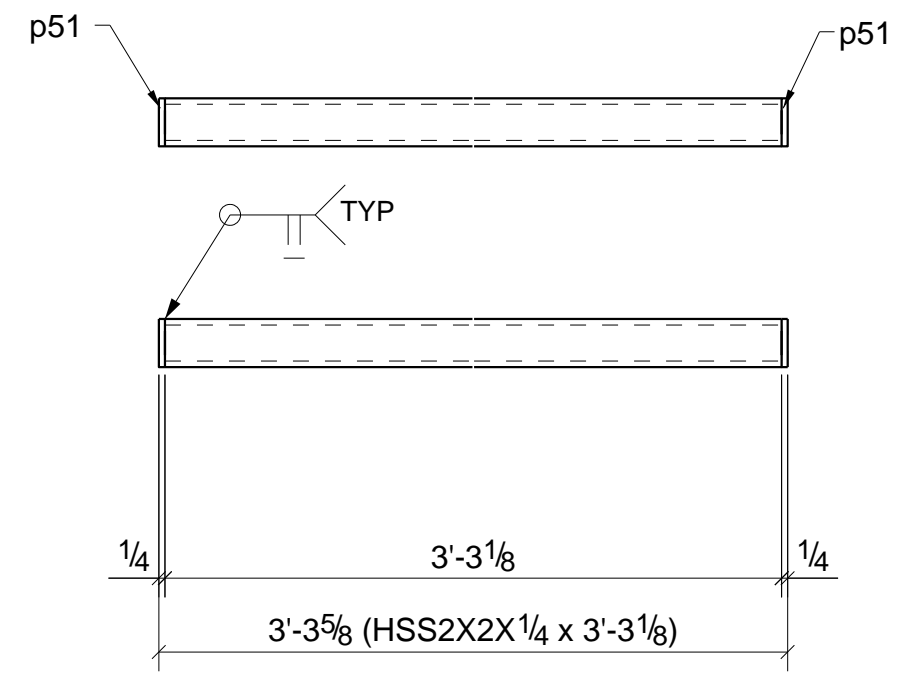
THE INFORMATION CONTAINED IN THIS DRAWING IS CONFIDENTIAL AND PROPRIETARY TO MARTIN'S METAL FABRICATION. ANY REPRODUCTION IN PART OR WHOLE WITHOUT THE WRITTEN PERMISSION OF MARTIN'S METAL FABRICATION IS PROHIBITED.

REVISIONS

GRID LOCATION
/-

BILL OF MATERIAL

| MARK | QTY | DESCRIPTION | LENGTH | WEIGHT | REMARKS |
|---------------------------|-----|-------------|-----------|--------|------------------|
| 9A | 1 | BRACE | | | SQ-2 |
| 9A | 1 | HSS2X2X1/4 | 3'-3 1/8" | 16.8 | ASTM A554 GR.304 |
| p51 | 2 | PL1/4"X2" | 0'-2" | 0.6 | ASTM A240 GR.304 |
| TOTAL WEIGHT THIS DRAWING | | | | 17 | |
| | QTY | SITE BOLTS | LENGTH | | |



ONE - BRACE - 9A

REF: E5

- Notes:
- 1.Welding Electrodes: E70XX Low Hydrogen
 - 2.Surface Prep: SSPC SP-2
 - 3.Shop Primer: Minimum DFT=2.0 Mil

MARTIN'S METAL FABRICATION

STRUCTURAL STEEL DIVISION
VACAVILLE CA.

| | | | | |
|------|----|------------|-----------|--------|
| DWG: | MF | 01/04/2022 | QTY REQD: | SCALE: |
| CHK: | | | MATL: | |

PRIMER:

| | |
|---------------|-------------------------------|
| TITLE: | DL2 ACCESS PLATFORM EXTENSION |
| PROJECT NAME: | BRACE |
| PROJECT ADD.: | |
| DESCRIPTION: | |
| SIZE: | A |
| DWG NO: | 9A |
| JOB No.: | 210468 |
| SHT OF: | REV: 1 |

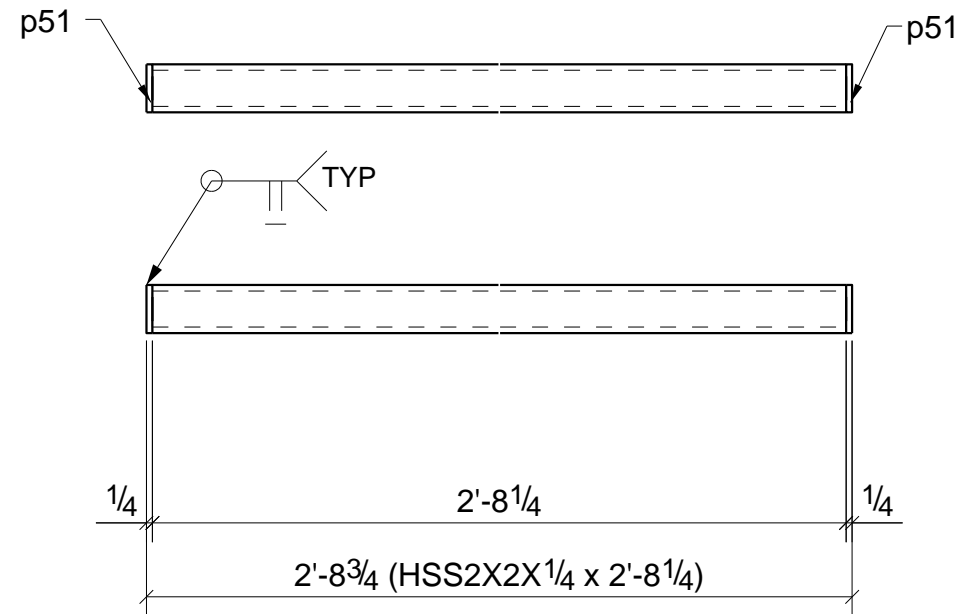
| NO. | BY | APPD | DATE | DESCRIPTION |
|-----|----|------|------------|---------------------------|
| | | | | |
| 1 | | | 01/04/2022 | PER NEW DESIGN & APPROVAL |
| | | | | |
| | | | | |
| | | | | |

TOLERANCES ARE IN INCHES,
UNLESS OTHERWISE SPECIFIED
FRACTIONS: ± 1/16"
DECIMALS:
.XX ± .015
.XXX ± .005
.XXXX ± .0005
ANGLES: ± 1°

THE INFORMATION CONTAINED IN THIS DRAWING IS CONFIDENTIAL AND PROPRIETARY TO MARTIN'S METAL FABRICATION. ANY REPRODUCTION IN PART OR WHOLE WITHOUT THE WRITTEN PERMISSION OF MARTIN'S METAL FABRICATION IS PROHIBITED.

BILL OF MATERIAL

| MARK | QTY | DESCRIPTION | LENGTH | WEIGHT | REMARKS |
|---------------------------|-----|-------------|-----------|--------|------------------|
| 10A | 1 | BRACE | | | SQ-2 |
| 10A | 1 | HSS2X2X1/4 | 2'-8 1/4" | 13.8 | ASTM A554 GR.304 |
| p51 | 2 | PL1/4"X2" | 0'-2" | 0.6 | ASTM A240 GR.304 |
| TOTAL WEIGHT THIS DRAWING | | | | 14 | |
| | QTY | SITE BOLTS | LENGTH | | |



ONE - BRACE - 10A

REF: E5

- Notes:
- 1.Welding Electrodes: E70XX Low Hydrogen
 - 2.Surface Prep: SSPC SP-2
 - 3.Shop Primer: Minimum DFT=2.0 Mil

MARTIN'S METAL FABRICATION

STRUCTURAL STEEL DIVISION
VACAVILLE CA.

| | | | | |
|------|----|------------|-----------|--------|
| DWG: | MF | 01/04/2022 | QTY REQD: | SCALE: |
| CHK: | | | MATL: | |

| | | | | |
|---|-------------|----------------|--------|--------|
| PRIMER: | | | | |
| TITLE: PROJECT NAME DL2 ACCESS PLATFORM EXTENSION PROJECT ADD. DESCRIPTION BRACE | | | | |
| SIZE: A | DWG NO: 10A | JOB No. 210468 | SHT OF | REV: 1 |

| NO. | BY | APPD | DATE | DESCRIPTION |
|-----|----|------|------------|---------------------------|
| | | | | |
| 1 | | | 01/04/2022 | PER NEW DESIGN & APPROVAL |
| | | | | |
| | | | | |
| | | | | |

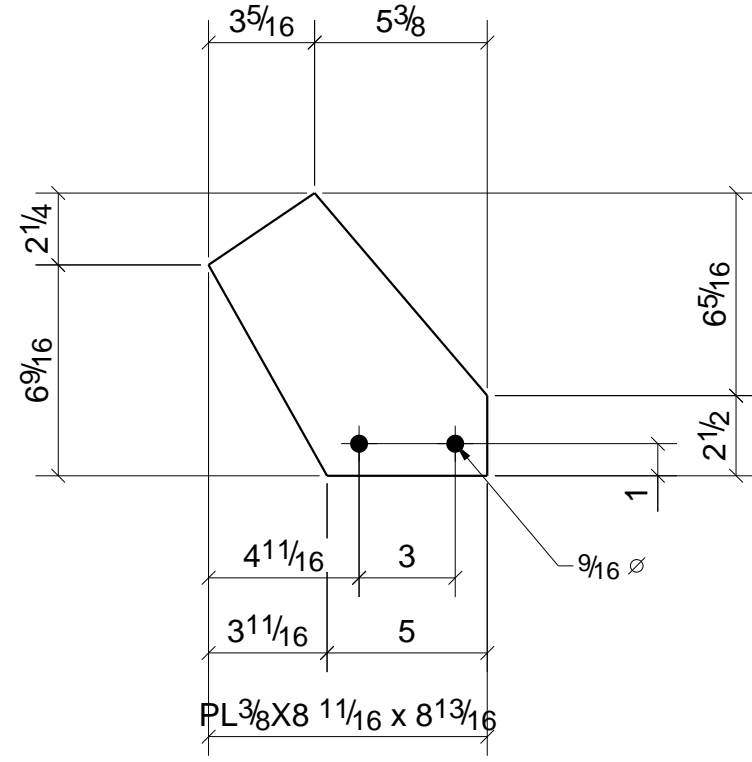
TOLERANCES ARE IN INCHES,
UNLESS OTHERWISE SPECIFIED
FRACTIONS: ± 1/16"
DECIMALS:
.XX ± .015
.XXX ± .005
.XXXX ± .0005
ANGLES: ± 1°

THE INFORMATION CONTAINED IN THIS DRAWING IS CONFIDENTIAL AND PROPRIETARY TO MARTIN'S METAL FABRICATION. ANY REPRODUCTION IN PART OR WHOLE WITHOUT THE WRITTEN PERMISSION OF MARTIN'S METAL FABRICATION IS PROHIBITED.

GRID LOCATION
/-

BILL OF MATERIAL

| MARK | QTY | DESCRIPTION | LENGTH | WEIGHT | REMARKS |
|---------------------------|---------------------------------|-----------------|-------------|--------|------------------|
| 11A | 1 | PLATE | | | BEV-2 |
| 11A | 1 | PL3/8"X8 11/16" | 0'-8 13/16" | 4.7 | ASTM A240 GR.304 |
| TOTAL WEIGHT THIS DRAWING | | | | 5 | |
| QTY | SITE BOLTS | | LENGTH | | |
| 2 | 1/2" Diam ASTM F593 GR.304 BOLT | | 3 1/4" | | |



ONE - PLATE - 11A

REF: E5

- Notes:
- 1.Welding Electrodes: E70XX Low Hydrogen
 - 2.Surface Prep: SSPC SP-2
 - 3.Shop Primer: Minimum DFT=2.0 Mil

MARTIN'S METAL FABRICATION

STRUCTURAL STEEL DIVISION
VACAVILLE CA.

| | | | | |
|------|----|------------|-----------|--------|
| DWG: | MF | 01/04/2022 | QTY REQD: | SCALE: |
| CHK: | | | MATL: | |

PRIMER:

| | |
|--------------|-------------------------------|
| TITLE: | DL2 ACCESS PLATFORM EXTENSION |
| PROJECT NAME | DL2 ACCESS PLATFORM EXTENSION |
| PROJECT ADD. | |
| DESCRIPTION | PLATE |
| SIZE: | A |
| DWG NO: | 11A |
| SHT OF | 1 |
| REV: | 1 |

JOB No. 210468

| NO. | BY | APPD | DATE | DESCRIPTION |
|-----|----|------|------------|---------------------------|
| 1 | | | 01/04/2022 | PER NEW DESIGN & APPROVAL |
| | | | | |
| | | | | |
| | | | | |

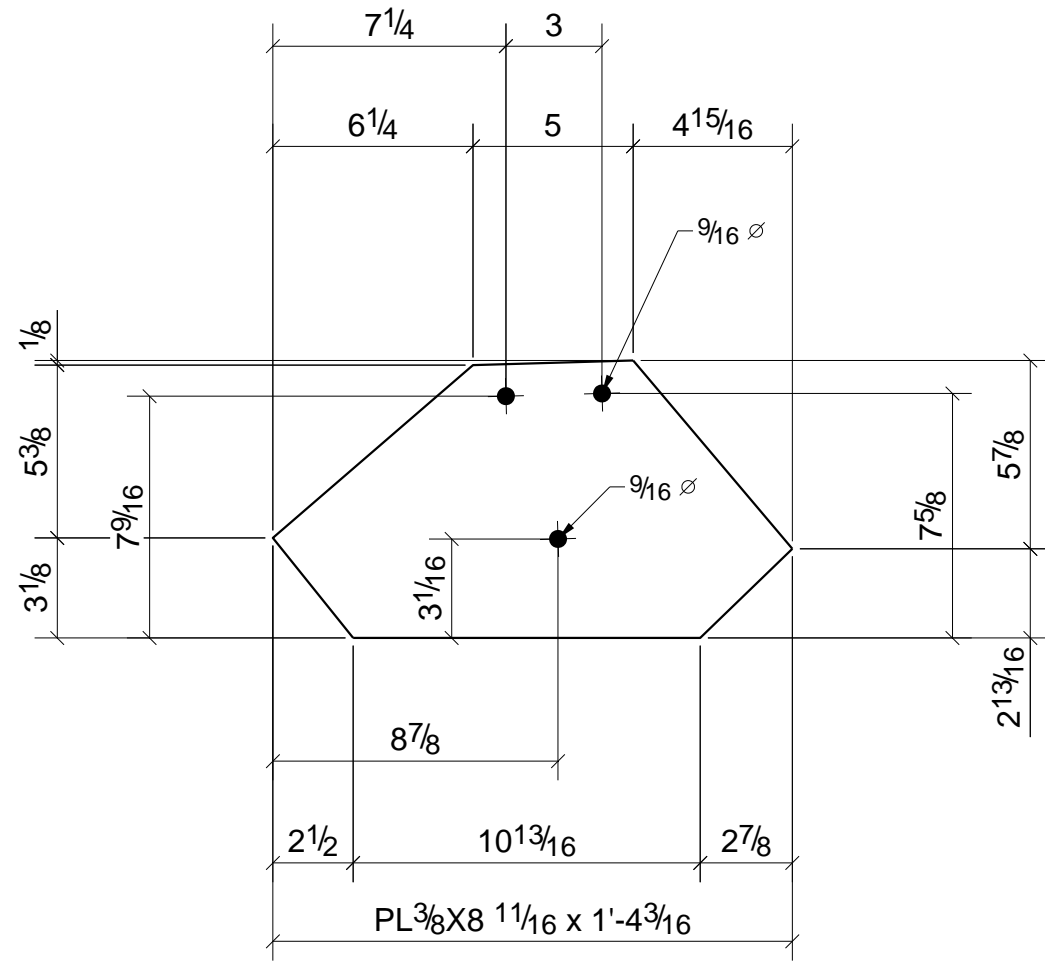
TOLERANCES ARE IN INCHES, UNLESS OTHERWISE SPECIFIED
 FRACTIONS: ± 1/16"
 DECIMALS:
 .XX ± .015
 .XXX ± .005
 .XXXX ± .0005
 ANGLES: ± 1°

THE INFORMATION CONTAINED IN THIS DRAWING IS CONFIDENTIAL AND PROPRIETARY TO MARTIN'S METAL FABRICATION. ANY REPRODUCTION IN PART OR WHOLE WITHOUT THE WRITTEN PERMISSION OF MARTIN'S METAL FABRICATION IS PROHIBITED.

BILL OF MATERIAL

| MARK | QTY | DESCRIPTION | LENGTH | WEIGHT | REMARKS |
|---------------------------|-----|-----------------|------------|--------|------------------|
| 12A | 1 | PLATE | | | BEV-2 |
| 12A | 1 | PL3/8"X8 11/16" | 1'-4 3/16" | 10.6 | ASTM A240 GR.304 |
| TOTAL WEIGHT THIS DRAWING | | | | 11 | |

| QTY | SITE BOLTS | LENGTH |
|-----|---------------------------------|--------|
| 3 | 1/2" Diam ASTM F593 GR.304 BOLT | 3 1/4" |



ONE - PLATE - 12A

REF: E5

- Notes:
- 1.Welding Electrodes: E70XX Low Hydrogen
 - 2.Surface Prep: SSPC SP-2
 - 3.Shop Primer: Minimum DFT=2.0 Mil

MARTIN'S METAL FABRICATION

STRUCTURAL STEEL DIVISION
VACAVILLE CA.

| | | | | |
|------|----|------------|-----------|--------|
| DWG: | MF | 01/04/2022 | QTY REQD: | SCALE: |
| CHK: | | | MATL: | |

PRIMER:

| | |
|--------------|-------------------------------|
| TITLE | DL2 ACCESS PLATFORM EXTENSION |
| PROJECT NAME | DL2 ACCESS PLATFORM EXTENSION |
| PROJECT ADD. | |
| DESCRIPTION | PLATE |
| SIZE: A | DWG NO: 12A |
| SHT OF | REV: 1 |

JOB No. 210468

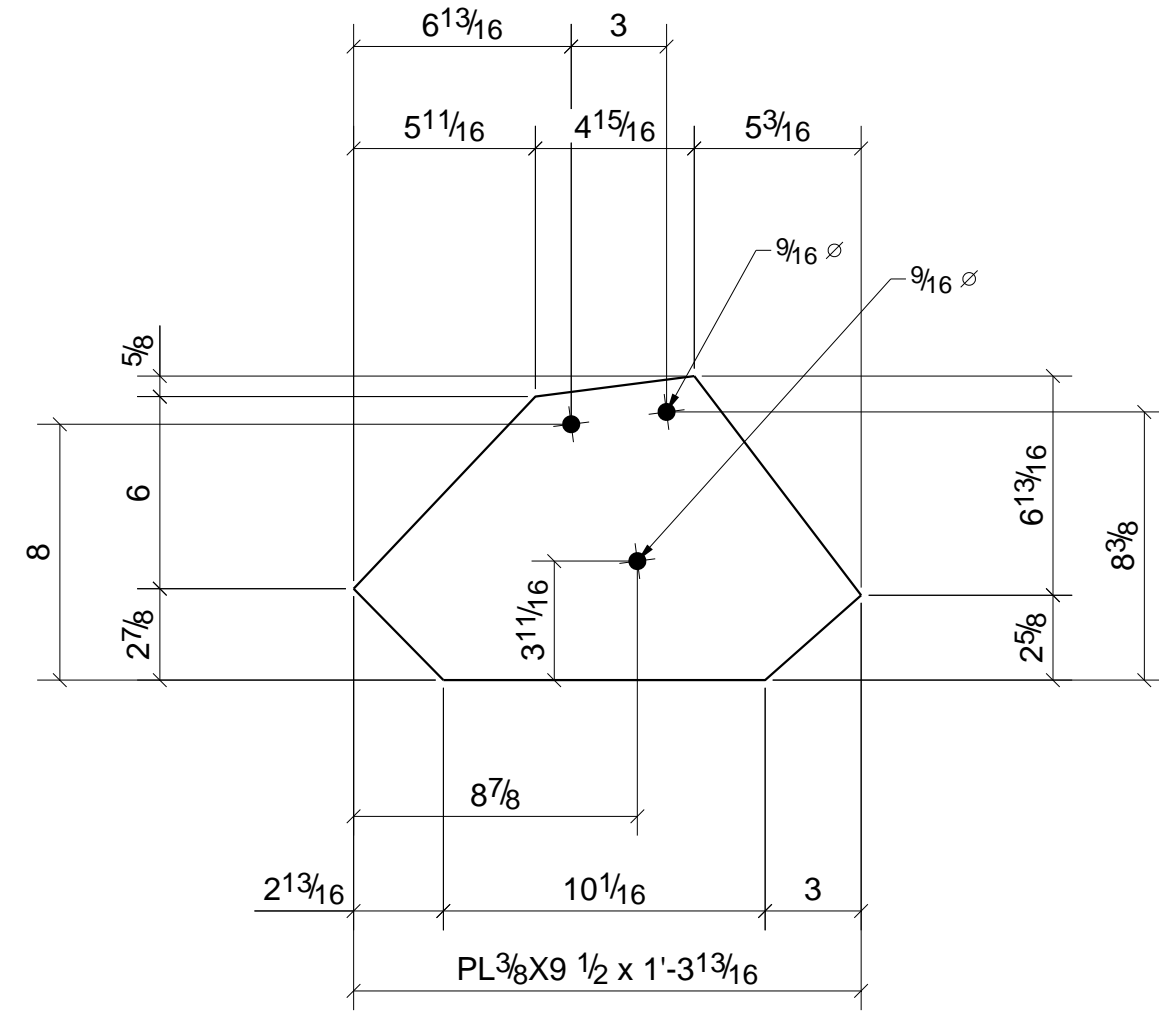
| NO. | BY | APPD | DATE | DESCRIPTION |
|-----|----|------|------------|---------------------------|
| | | | | |
| 1 | | | 01/04/2022 | PER NEW DESIGN & APPROVAL |

TOLERANCES ARE IN INCHES, UNLESS OTHERWISE SPECIFIED
 FRACTIONS: ± 1/16"
 DECIMALS:
 .XX ± .015
 .XXX ± .005
 .XXXX ± .0005
 ANGLES: ± 1°

THE INFORMATION CONTAINED IN THIS DRAWING IS CONFIDENTIAL AND PROPRIETARY TO MARTIN'S METAL FABRICATION. ANY REPRODUCTION IN PART OR WHOLE WITHOUT THE WRITTEN PERMISSION OF MARTIN'S METAL FABRICATION IS PROHIBITED.

BILL OF MATERIAL

| MARK | QTY | DESCRIPTION | LENGTH | WEIGHT | REMARKS |
|---------------------------|---------------------------------|---------------|-------------|--------|------------------|
| 13A | 1 | PLATE | | | BEV-2 |
| 13A | 1 | PL3/8"X9 1/2" | 1'-3 13/16" | 10.9 | ASTM A240 GR.304 |
| TOTAL WEIGHT THIS DRAWING | | | | 11 | |
| QTY | SITE BOLTS | | LENGTH | | |
| 3 | 1/2" Diam ASTM F593 GR.304 BOLT | | 3 1/4" | | |



ONE - PLATE - 13A

REF: E5

- Notes:
- 1.Welding Electrodes: E70XX Low Hydrogen
 - 2.Surface Prep: SSPC SP-2
 - 3.Shop Primer: Minimum DFT=2.0 Mil

MARTIN'S METAL FABRICATION

STRUCTURAL STEEL DIVISION
VACAVILLE CA.

| | | | | |
|------|----|------------|-----------|--------|
| DWG: | MF | 01/04/2022 | QTY REQD: | SCALE: |
| CHK: | | | MATL: | |

PRIMER:

| | |
|--------------|-------------------------------|
| TITLE | |
| PROJECT NAME | DL2 ACCESS PLATFORM EXTENSION |
| PROJECT ADD. | |
| DESCRIPTION | PLATE |
| SIZE: A | DWG NO: 13A |
| SHT OF | REV: 1 |

JOB No. 210468

| NO. | BY | APPD | DATE | DESCRIPTION |
|-----|----|------|------------|---------------------------|
| | | | | |
| 1 | | | 01/04/2022 | PER NEW DESIGN & APPROVAL |
| | | | | |
| | | | | |
| | | | | |

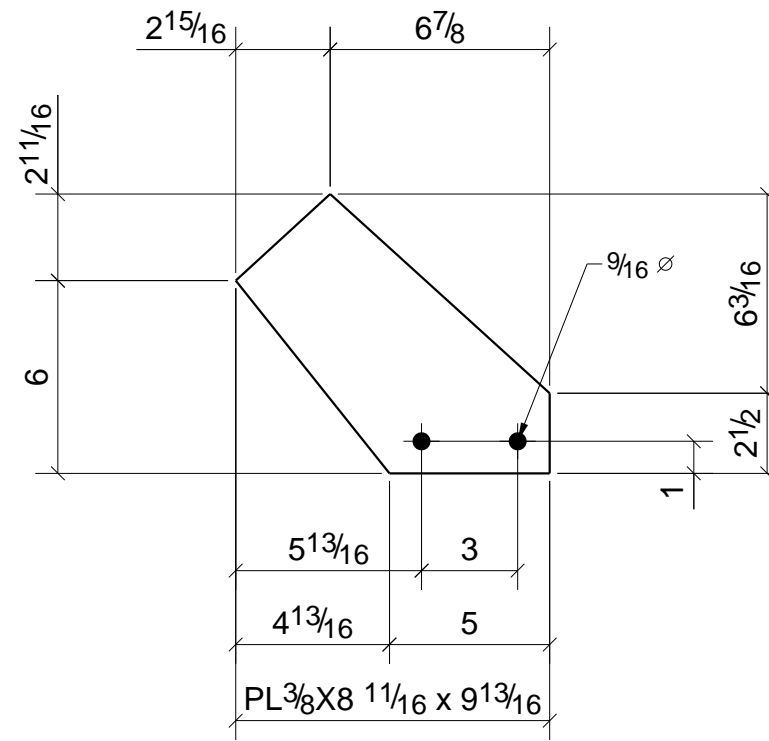
TOLERANCES ARE IN INCHES, UNLESS OTHERWISE SPECIFIED
FRACTIONS: ± 1/16"
DECIMALS:
.XX ± .015
.XXX ± .005
.XXXX ± .0005
ANGLES: ± 1°

THE INFORMATION CONTAINED IN THIS DRAWING IS CONFIDENTIAL AND PROPRIETARY TO MARTIN'S METAL FABRICATION. ANY REPRODUCTION IN PART OR WHOLE WITHOUT THE WRITTEN PERMISSION OF MARTIN'S METAL FABRICATION IS PROHIBITED.

GRID LOCATION
/-

BILL OF MATERIAL

| MARK | QTY | DESCRIPTION | LENGTH | WEIGHT | REMARKS |
|---------------------------|---------------------------------|-----------------|-------------|--------|------------------|
| 14A | 1 | PLATE | | | BEV-2 |
| 14A | 1 | PL3/8"X8 11/16" | 0'-9 13/16" | 4.9 | ASTM A240 GR.304 |
| TOTAL WEIGHT THIS DRAWING | | | | 5 | |
| QTY | SITE BOLTS | | LENGTH | | |
| 2 | 1/2" Diam ASTM F593 GR.304 BOLT | | 3 1/4" | | |



ONE - PLATE - 14A

REF: E5

- Notes:
- 1.Welding Electrodes: E70XX Low Hydrogen
 - 2.Surface Prep: SSPC SP-2
 - 3.Shop Primer: Minimum DFT=2.0 Mil

MARTIN'S METAL FABRICATION

STRUCTURAL STEEL DIVISION
VACAVILLE CA.

| | | | | |
|------|----|------------|-----------|--------|
| DWG: | MF | 01/04/2022 | QTY REQD: | SCALE: |
| CHK: | | | MATL: | |

PRIMER:

| | | | |
|--------------|-------------------------------|----------------|--------|
| TITLE | | | |
| PROJECT NAME | DL2 ACCESS PLATFORM EXTENSION | | |
| PROJECT ADD. | | | |
| DESCRIPTION | PLATE | | |
| SIZE: A | DWG NO: 14A | JOB No. 210468 | REV: 1 |

| NO. | BY | APPD | DATE | DESCRIPTION |
|-----|----|------|------------|---------------------------|
| | | | | |
| 1 | | | 01/04/2022 | PER NEW DESIGN & APPROVAL |
| | | | | |
| | | | | |
| | | | | |

TOLERANCES ARE IN INCHES,
UNLESS OTHERWISE SPECIFIED
FRACTIONS: ± 1/16"
DECIMALS:
.XX ± .015
.XXX ± .005
.XXXX ± .0005
ANGLES: ± 1°

THE INFORMATION CONTAINED IN THIS DRAWING IS CONFIDENTIAL AND PROPRIETARY TO MARTIN'S METAL FABRICATION. ANY REPRODUCTION IN PART OR WHOLE WITHOUT THE WRITTEN PERMISSION OF MARTIN'S METAL FABRICATION IS PROHIBITED.